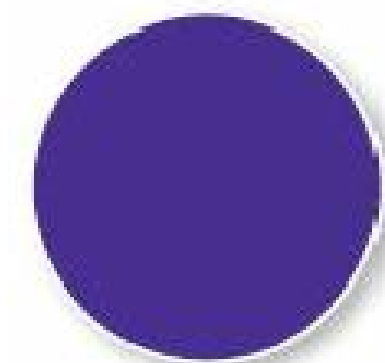


## INSTITUTIONAL COLORS



PANTONE 267 CVC  
PANTONE 268 CVU  
CMYK: 88, 99, 1, 0  
RGB: 75, 49, 144  
WEB: 4b3190

NOTE:  
DARK BRONZE AND OFF-WHITE COLORS TO BE  
SAMPLED AND SUBMITTED TO HR GREEN AND  
MCC FOR REVIEW AND APPROVAL

LOCATION

- LOCATE FREE STANDING MONUMENT SIGN A MINIMUM OF 10' OUTSIDE OF BUT ADJACENT TO THE PROPOSED HIGHWAY 14 RIGHT OF WAY AS SHOWN ON THE PLAN VIEW EXHIBIT.
- FINAL SIGN LOCATION TO BE STAKED IN THE FIELD AND TO BE REVIEWED AND APPROVED BY MCHENRY COUNTY COLLEGE PRIOR TO INSTALLATION.

TYPE AND DIMENSIONS OF SIGN

- FREE STANDING MONUMENT SIGN TO HAVE TWO SIGN FACES AS SHOWN IN THE SIGN ELEVATION DIAGRAM. SIGN SHELL TO BE MANUFACTURED OUT OF SHEET ALUMINUM AND COMPLETELY ENCLOSED AND SEALED WITH APPROPRIATE WATERPROOFING SEALANT AND FASTENERS. FRAMING AND STRUCTURAL SUPPORT TO BE MANUFACTURED OUT OF STEEL AND ALUMINUM AND DESIGNED/ENGINEERED BY THE SIGN MANUFACTURER. SHOP DRAWINGS DEPICTING STRUCTURAL DESIGN INTENT AND ELECTRICAL/LIGHTING DESIGN TO BE SUBMITTED TO HR GREEN FOR APPROVAL. ALL STRUCTURAL DESIGNS SHALL BE SIGNED/SEALED BY A LICENSED STRUCTURAL ENGINEER.
- OFFICIAL MCHENRY COUNTY COLLEGE LOGO AND PANTONE COLOR SCHEME TO BE USED. SIGN SHALL BE PAINTED WITH A HIGH QUALITY ENAMEL FINISH, SMOOTH AND FREE OF BLEMISHES.
- MCHENRY COUNTY COLLEGE LOGO SHALL BE MANUFACTURED OUT OF TRANSLUCENT/TRUE WHITE POLY CARBONATE AND ILLUMINATED (BACKLIT) FROM INSIDE THE SIGN. LOGO IS TO HAVE A CRISP LOOK WHEN ILLUMINATED AND HAVE A HIGH CONTRAST EFFECT BOTH DURING THE DAY AND AT NIGHT. CONTRACTOR TO PROVIDE SHOP DRAWINGS FOR PROPOSED LUMENS TO PRODUCE THIS EFFECT.
- SHOP DRAWINGS DEPICTING TEXT AND LOGO DESIGN/MANUFACTURING INTENT SHALL BE SUBMITTED TO HR GREEN FOR APPROVAL.
- TWO, 4'X10', 19 MM, FULL-COLOR LED DISPLAYS SHALL BE MOUNTED AND FRAMED IN SUCH A MANNER THAT THEY PROTRUDE 2 INCHES – 3 INCHES FROM THE SIGN FACE. LED MANUFACTURER TO BE CONSULTED BY SIGN MANUFACTURER FOR MOUNTING TECHNIQUES. SPECIFICATIONS AND SHOP DRAWINGS FROM THE LED MANUFACTURER SHALL BE SUBMITTED TO BOTH HR GREEN AND THE SIGN MANUFACTURE FOR APPROVAL.
- LED DISPLAYS ARE TO BE WATCHFIRE XVS19MM DISPLAYS OR APPROVED EQUAL.
- BUILT-IN LED SOFTWARE FOR LED MESSAGING SHALL BE USED.
- IT IS RECOMMENDED THAT THE SIGN MANUFACTURER REVIEW ALL DIMENSIONS AND SPECIFICATIONS AND PROVIDE INPUT TO HR GREEN TO ENSURE AN EFFICIENT USE OF MATERIAL WHILE MAINTAINING THE DESIGN INTENT OF THE SIGN. ANY CHANGES TO THE DESIGN, DIMENSIONS, OR SPECIFICATIONS MUST BE APPROVED BY HR GREEN.


## THE DESIGN, DIMENSION, INSTALLATION SPECIFICATIONS

- ALL FASTENERS SHALL BE STAINLESS STEEL.
- BASE OF SIGN SHALL SIT ON FINISHED GRADE WITH APPROPRIATE WEEP HOLES, GRADE SLOPE, AND WATER PROOFING MATERIAL IMPLEMENTED TO ENSURE MINIMUM RISK OF RUST OR OTHER WATER DAMAGE.
- ELECTRIC LINE WILL BE AVAILABLE AND SHOULD TO BE UTILIZED FOR ALL INTERNAL LED LIGHTS AND BOTH LED DISPLAYS.
- WIRELESS BROADBAND DATA CONNECTION IS TO BE USED FOR BOTH LED DISPLAYS. THE WIFI SIGNAL FROM THE LED NEEDS TO BE ACCESSIBLE FROM THE COLLEGE MAIN BUILDING SO A FIBER OPTIC DATA LINE DOES NOT NEED TO BE INSTALLED. CONTRACTOR IS TO CONTACT MCC I.T. DEPARTMENT TO VERIFY WIRELESS BROADBAND CONNECTION SPECIFICATIONS.
- CONTRACTOR TO COORDINATE WITH HR GREEN FOR FINAL GRADE ELEVATION AND THE EXISTING GRADE CUT TO MEET THIS ELEVATION SHALL BE EVENLY SPREAD AROUND THE SIGN. ALL DISTURBED AREAS AROUND SIGN SHALL MAINTAIN 6" TOPSOIL. ALL DISTURBED AREAS SHALL BE RESTORED, INCLUDING BUT NOT LIMITED TO: TRENCHES DUG FOR UTILITY INSTALLATION, GRADING OUTSIDE OF THE LANDSCAPE AREA, DISTURBED AREAS DUE TO CONSTRUCTION VEHICLES, ETC.
- CONTRACTOR SHALL LOCATE ALL UTILITIES PRIOR TO CONSTRUCTION.
- CONTRACTOR IS TO OBTAIN ALL CITY PERMITS NECESSARY PRIOR TO CONSTRUCTION. PERMITS SHALL BE SUBMITTED TO HR GREEN FOR RECORD.



DRAWN BY: SKD                      JOB DATE: 2016  
APPROVED: PLS                    JOB NUMBER: 86130030  
CAD DATE: \_\_\_\_\_  
CAD FILE: \_\_\_\_\_

JOB DATE: 2016  
JOB NUMBER: 86130030

BAR IS ONE INCH ON  
OFFICIAL DRAWINGS.  
0  1"  
IF NOT ONE INCH,  
ADJUST SCALE ACCORDINGLY.

NO.	DATE	BY	REVISION DESCRIPTION



ILLINOIS DESIGN FIRM # 184.001322  
420 N. FRONT STREET, SUITE 100  
McHENRY, ILLINOIS 60050  
PHONE: 815.385.1778 | TOLL FREE: 800.728.7805  
FAX: 815.385.1781 | [HRGreen.com](http://HRGreen.com)



MCC CAMPUS SIGN PACKAGE  
PRIMARY AND SECONDARY MONUMENT SIGNS

McHENRY, ILLINOIS

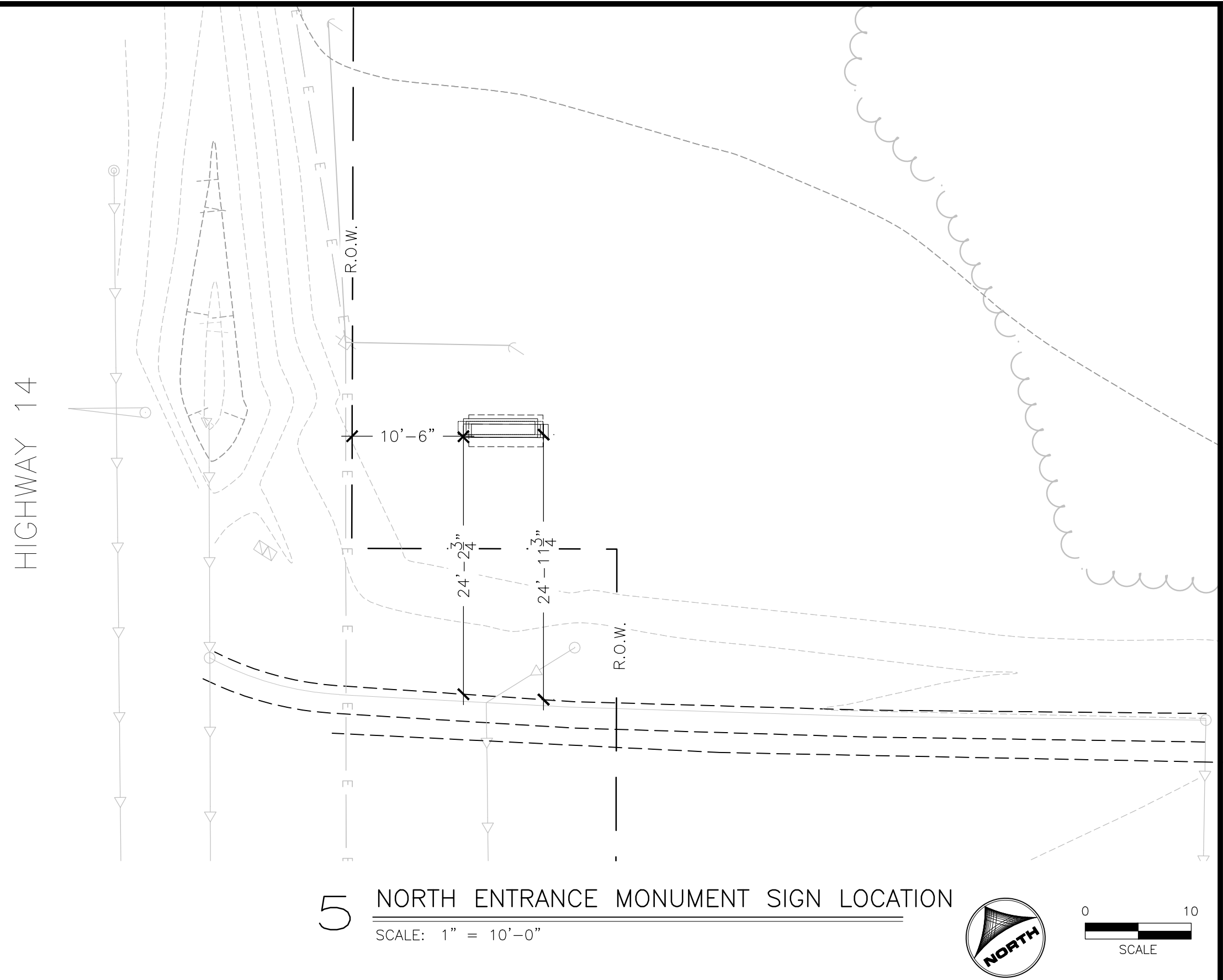
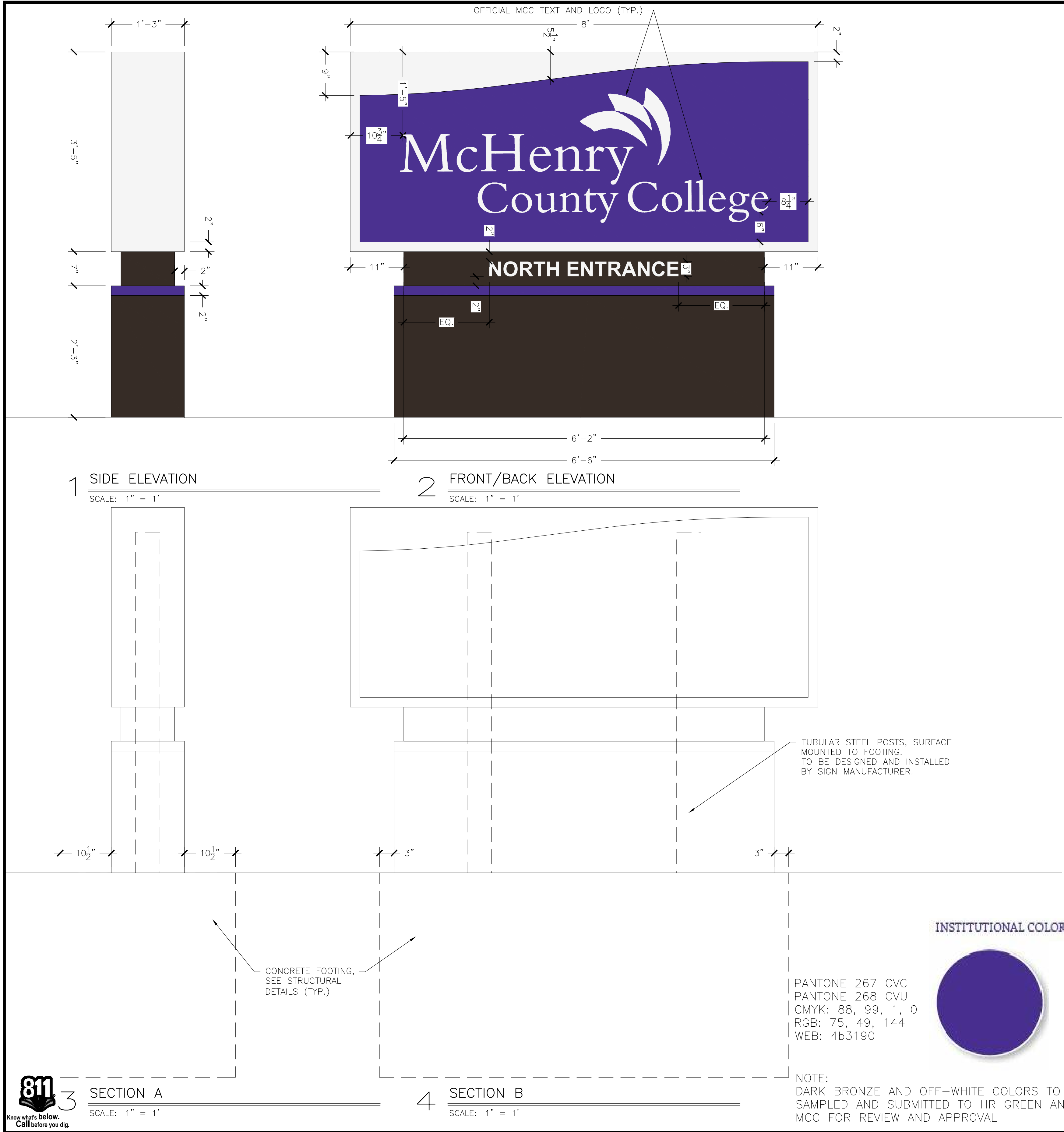
PRIMARY MONUMENT SIGN

SHEET NO.

C.02

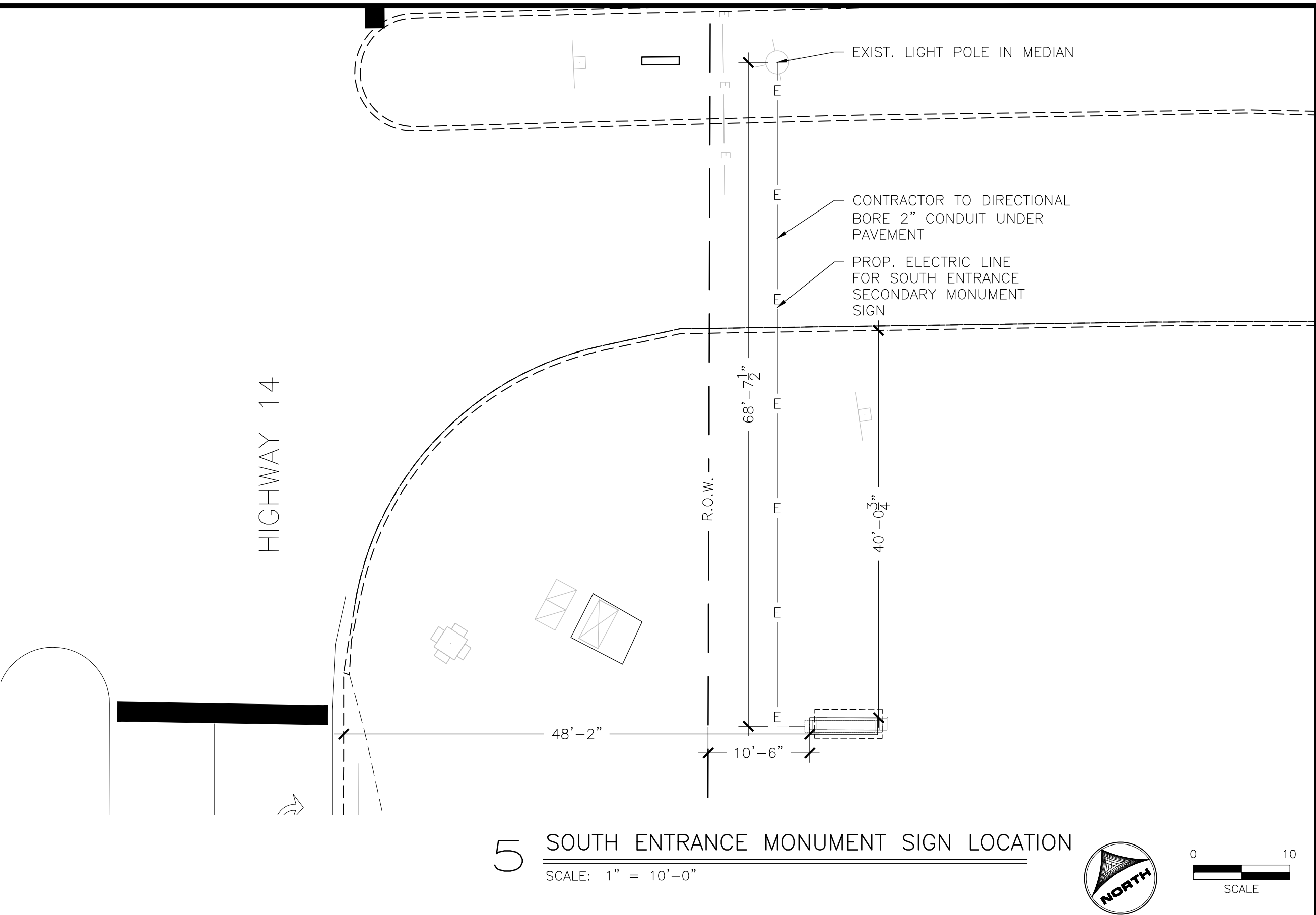
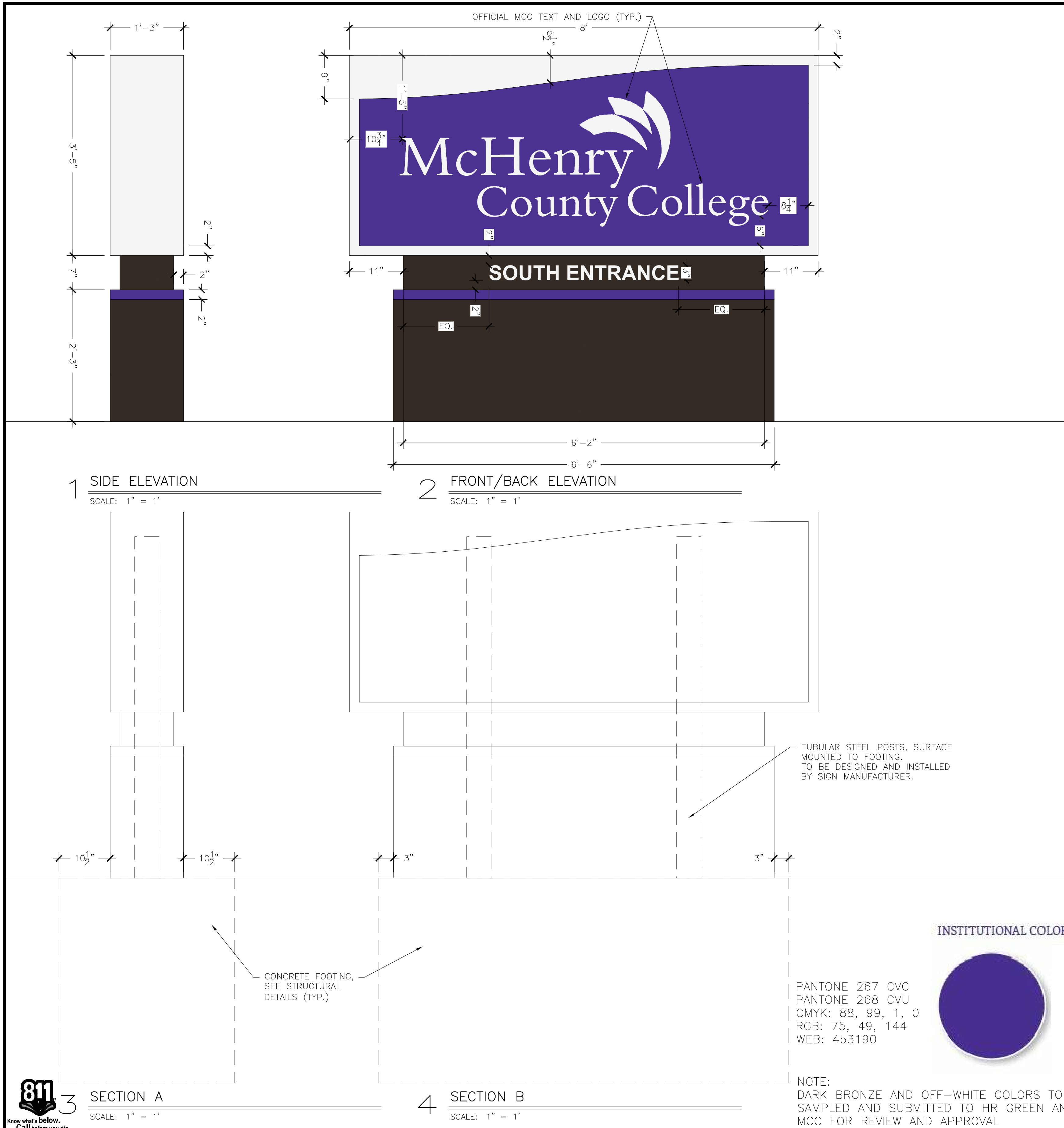






- LOCATION**
- LOCATE FREE STANDING MONUMENT SIGN 10' OUTSIDE OF BUT ADJACENT TO THE PROPOSED HIGHWAY 14 RIGHT OF WAY AS SHOWN ON THE PLAN VIEW EXHIBIT.
  - FINAL SIGN LOCATION TO BE STAKED IN THE FIELD AND TO BE REVIEWED AND APPROVED BY MCHENRY COUNTY COLLEGE PRIOR TO INSTALLATION.
- TYPE AND DIMENSIONS OF SIGN**
- FREE STANDING MONUMENT SIGN TO HAVE TWO IDENTICAL SIGN FACES AS SHOWN IN THE SIGN ELEVATION DIAGRAM. SIGN SHELL TO BE MANUFACTURED OUT OF SHEET ALUMINUM AND COMPLETELY ENCLOSED AND SEALED WITH APPROPRIATE WATERPROOFING SEALANT AND FASTENERS. FRAMING AND STRUCTURAL SUPPORT TO BE MANUFACTURED OUT OF STEEL AND ALUMINUM AND DESIGNED/ENGINEERED BY THE SIGN MANUFACTURER. SHOP DRAWINGS DEPICTING STRUCTURAL DESIGN INTENT AND ELECTRICAL/LIGHTING DESIGN TO BE SUBMITTED TO HR GREEN FOR APPROVAL. ALL STRUCTURAL DESIGNS SHALL BE SIGNED/SEALED BY A LICENSED STRUCTURAL ENGINEER.
  - OFFICIAL MCHENRY COUNTY COLLEGE LOGO AND PANTONE COLOR SCHEME TO BE USED. SIGN SHALL BE PAINTED WITH A HIGH QUALITY ENAMEL FINISH, SMOOTH AND FREE OF BLEMISHES.
  - "NORTH ENTRANCE" TEXT SHALL BE ARIAL BOLD FONT, 3" TALL LETTERING AS INDICATED ON THE SIGN ELEVATION DIAGRAM. ALL TEXT INCLUDING THE MCHENRY COUNTY COLLEGE LOGO SHALL BE MANUFACTURED OUT OF TRANSLUCENT/TRUE WHITE POLY CARBONATE AND ILLUMINATED (BACKLIT) FROM INSIDE THE SIGN. TEXT IS TO HAVE A CRISP LOOK WHEN ILLUMINATED AND HAVE A HIGH CONTRAST EFFECT BOTH DURING THE DAY AND AT NIGHT. CONTRACTOR TO PROVIDE SHOP DRAWINGS FOR PROPOSED LUMENS TO PRODUCE THIS EFFECT.
  - SHOP DRAWINGS DEPICTING TEXT AND LOGO DESIGN/MANUFACTURING INTENT SHALL BE SUBMITTED TO HR GREEN FOR APPROVAL.
  - IT IS RECOMMENDED THAT THE SIGN MANUFACTURER REVIEW ALL DIMENSIONS AND SPECIFICATIONS AND PROVIDE INPUT TO HR GREEN TO ENSURE AN EFFICIENT USE OF MATERIAL WHILE MAINTAINING THE DESIGN INTENT OF THE SIGN. ANY CHANGES TO THE DESIGN, DIMENSIONS, OR SPECIFICATIONS MUST BE APPROVED BY HR GREEN.
- INSTALLATION SPECIFICATIONS**
- ALL FASTENERS SHALL BE STAINLESS STEEL.
  - BASE OF SIGN SHALL SIT ON FINISHED GRADE WITH APPROPRIATE WEEP HOLES, GRADE SLOPE, AND WATER PROOFING MATERIAL IMPLEMENTED TO ENSURE MINIMUM RISK OF RUST OR OTHER WATER DAMAGE.
  - ELECTRIC LINE WILL BE AVAILABLE AND SHOULD TO BE UTILIZED FOR INTERNAL LED LIGHTS,
  - CONTRACTOR TO COORDINATE WITH HR GREEN FOR FINAL GRADE ELEVATION AND THE EXISTING GRADE CUT TO MEET THIS ELEVATION SHALL BE EVENLY SPREAD AROUND THE SIGN. ALL DISTURBED AREAS AROUND SIGN SHALL MAINTAIN 6" TOPSOIL. ALL DISTURBED AREAS SHALL BE RESTORED, INCLUDING BUT NOT LIMITED TO: TRENCHES DUG FOR UTILITY INSTALLATION, GRADING OUTSIDE OF THE LANDSCAPE AREA, DISTURBED AREAS DUE TO CONSTRUCTION VEHICLES, ETC.
  - CONTRACTOR SHALL LOCATE ALL UTILITIES PRIOR TO CONSTRUCTION.
  - CONTRACTOR IS TO OBTAIN ALL CITY PERMITS NECESSARY PRIOR TO CONSTRUCTION. PERMITS SHALL BE SUBMITTED TO HR GREEN FOR RECORD.





- LOCATION**
- LOCATE FREE STANDING MONUMENT SIGN 10' OUTSIDE OF BUT ADJACENT TO THE PROPOSED HIGHWAY 14 RIGHT OF WAY AS SHOWN ON THE PLAN VIEW EXHIBIT.
  - FINAL SIGN LOCATION TO BE STAKED IN THE FIELD AND TO BE REVIEWED AND APPROVED BY MCHENRY COUNTY COLLEGE PRIOR TO INSTALLATION.
- TYPE AND DIMENSIONS OF SIGN**
- FREE STANDING MONUMENT SIGN TO HAVE TWO IDENTICAL SIGN FACES AS SHOWN IN THE SIGN ELEVATION DIAGRAM. SIGN SHELL TO BE MANUFACTURED OUT OF SHEET ALUMINUM AND COMPLETELY ENCLOSED AND SEALED WITH APPROPRIATE WATERPROOFING SEALANT AND FASTENERS. FRAMING AND STRUCTURAL SUPPORT TO BE MANUFACTURED OUT OF STEEL AND ALUMINUM AND DESIGNED/ENGINEERED BY THE SIGN MANUFACTURER. SHOP DRAWINGS DEPICTING STRUCTURAL DESIGN INTENT AND ELECTRICAL/LIGHTING DESIGN TO BE SUBMITTED TO HR GREEN FOR APPROVAL. ALL STRUCTURAL DESIGNS SHALL BE SIGNED/SEALED BY A LICENSED STRUCTURAL ENGINEER.
  - OFFICIAL MCHENRY COUNTY COLLEGE LOGO AND PANTONE COLOR SCHEME TO BE USED. SIGN SHALL BE PAINTED WITH A HIGH QUALITY ENAMEL FINISH, SMOOTH AND FREE OF BLEMISHES.
  - "SOUTH ENTRANCE" TEXT SHALL BE ARIAL BOLD FONT, 3" TALL LETTERING AS INDICATED ON THE SIGN ELEVATION DIAGRAM. ALL TEXT INCLUDING THE MCHENRY COUNTY COLLEGE LOGO SHALL BE MANUFACTURED OUT OF TRANSLUCENT/TRUE WHITE POLY CARBONATE AND ILLUMINATED (BACKLIT) FROM INSIDE THE SIGN. TEXT IS TO HAVE A CRISP LOOK WHEN ILLUMINATED AND HAVE A HIGH CONTRAST EFFECT BOTH DURING THE DAY AND AT NIGHT. CONTRACTOR TO PROVIDE SHOP DRAWINGS FOR PROPOSED LUMENS TO PRODUCE THIS EFFECT.
  - SHOP DRAWINGS DEPICTING TEXT AND LOGO DESIGN/MANUFACTURING INTENT SHALL BE SUBMITTED TO HR GREEN FOR APPROVAL.
  - IT IS RECOMMENDED THAT THE SIGN MANUFACTURER REVIEW ALL DIMENSIONS AND SPECIFICATIONS AND PROVIDE INPUT TO HR GREEN TO ENSURE AN EFFICIENT USE OF MATERIAL WHILE MAINTAINING THE DESIGN INTENT OF THE SIGN. ANY CHANGES TO THE DESIGN, DIMENSIONS, OR SPECIFICATIONS MUST BE APPROVED BY HR GREEN.
- INSTALLATION SPECIFICATIONS**
- ALL FASTENERS SHALL BE STAINLESS STEEL.
  - BASE OF SIGN SHALL SIT ON FINISHED GRADE WITH APPROPRIATE WEEP HOLES, GRADE SLOPE, AND WATER PROOFING MATERIAL IMPLEMENTED TO ENSURE MINIMUM RISK OF RUST OR OTHER WATER DAMAGE.
  - NEW ELECTRIC LINE SHALL BE RAN FROM MEDIAN HAND HOLE TO SOUTH ENTRANCE SECONDARY MONUMENT SIGN.
  - CONTRACTOR TO COORDINATE WITH HR GREEN FOR FINAL GRADE ELEVATION AND THE EXISTING GRADE CUT TO MEET THIS ELEVATION SHALL BE EVENLY SPREAD AROUND THE SIGN. ALL DISTURBED AREAS AROUND SIGN SHALL MAINTAIN 6" TOPSOIL. ALL DISTURBED AREAS SHALL BE RESTORED, INCLUDING BUT NOT LIMITED TO: TRENCHES DUG FOR UTILITY INSTALLATION, GRADING OUTSIDE OF THE LANDSCAPE AREA, DISTURBED AREAS DUE TO CONSTRUCTION VEHICLES, ETC.
  - CONTRACTOR SHALL LOCATE ALL UTILITIES PRIOR TO CONSTRUCTION.
  - CONTRACTOR IS TO OBTAIN ALL CITY PERMITS NECESSARY PRIOR TO CONSTRUCTION. PERMITS SHALL BE SUBMITTED TO HR GREEN FOR RECORD.

**811**  
Know what's below.  
Call before you dig.

3 SECTION A  
SCALE: 1" = 1'

4 SECTION B  
SCALE: 1" = 1'

DRAWN BY: SKD  
APPROVED: PLS  
CAD DATE:  
CAD FILE:

JOB DATE: 2016  
JOB NUMBER: 86130030

BAR IS ONE INCH ON OFFICIAL DRAWINGS.  
0 1"  
IF NOT ONE INCH, ADJUST SCALE ACCORDINGLY.

NO.	DATE	BY	REVISION DESCRIPTION

**HRGreen**

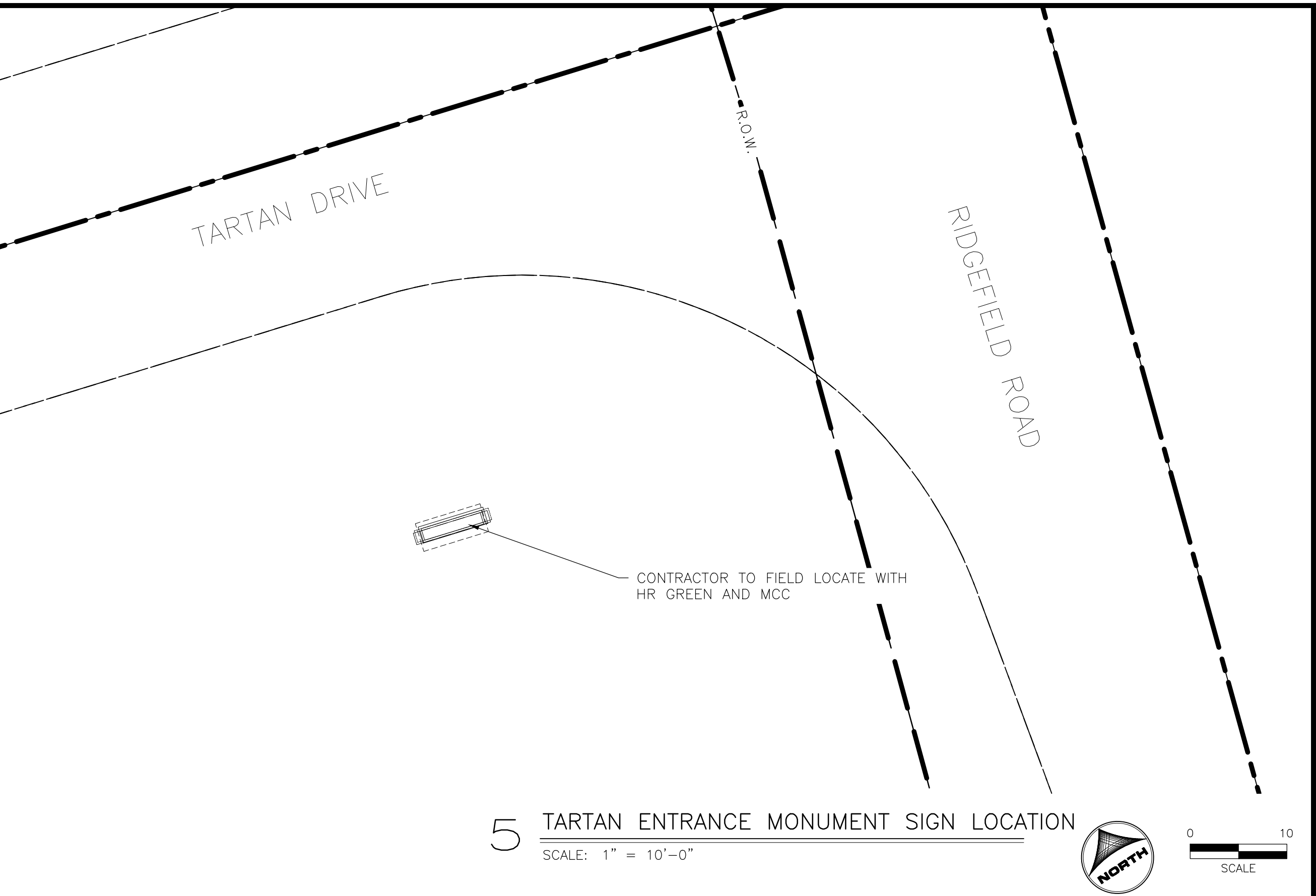
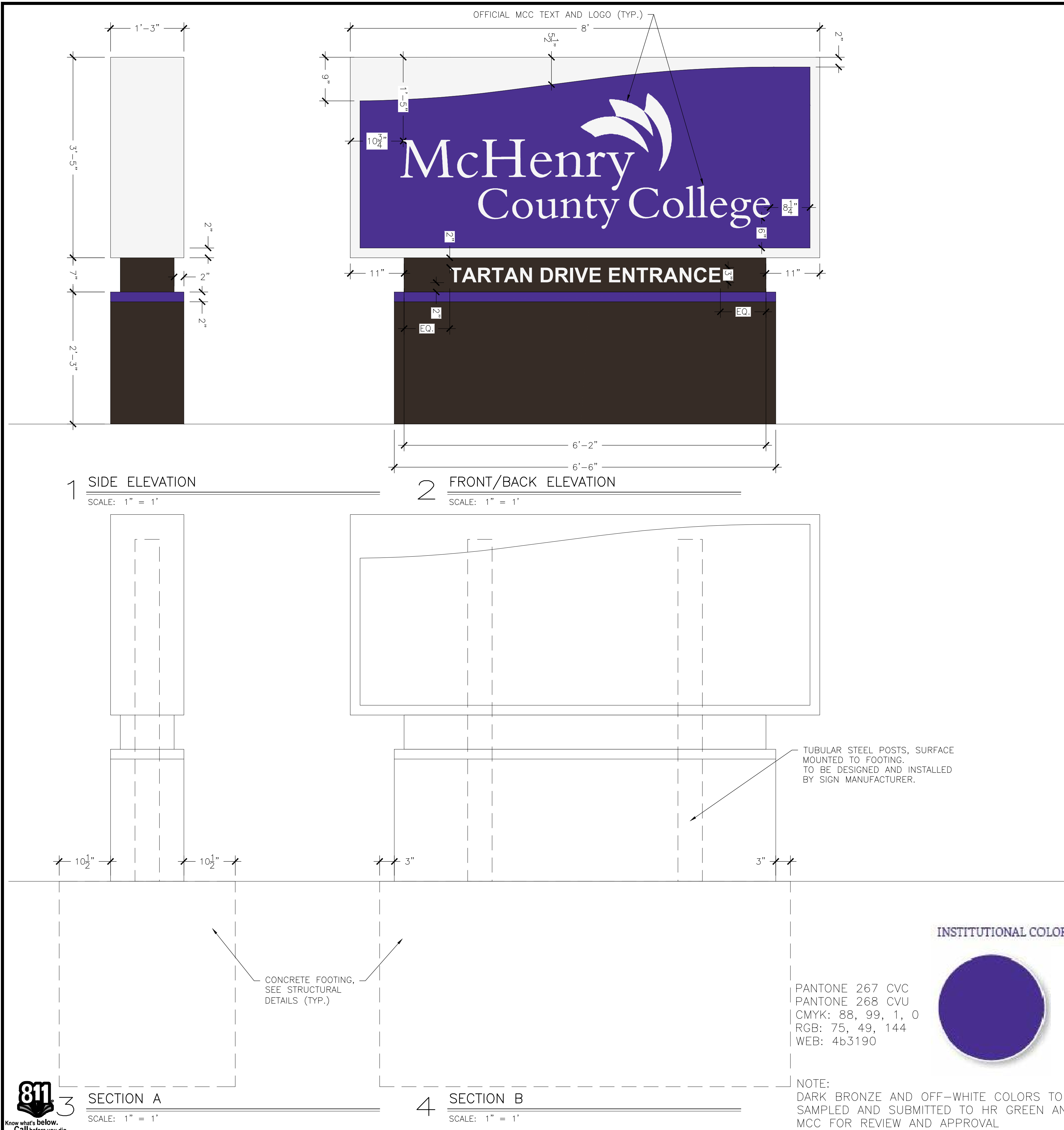
ILLINOIS DESIGN FIRM # 184.001322  
420 N. FRONT STREET, SUITE 100  
MCHENRY, ILLINOIS 60050  
PHONE: 815.385.1778 | TOLL FREE: 800.728.7805  
FAX: 815.385.1781 | HRGreen.com



**MCC CAMPUS SIGN PACKAGE**  
PRIMARY AND SECONDARY MONUMENT SIGNS  
MCHENRY, ILLINOIS

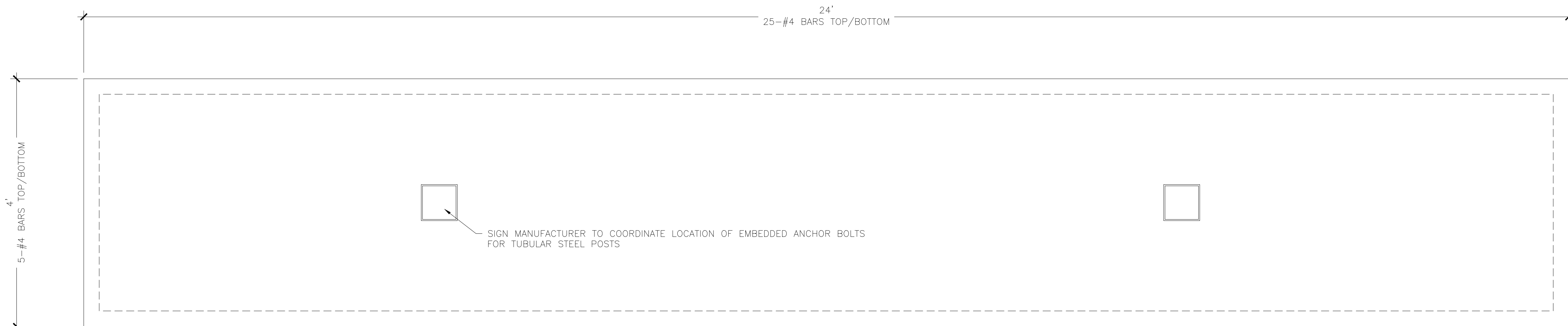
SECONDARY MONUMENT SIGN

SHEET NO.  
C.05

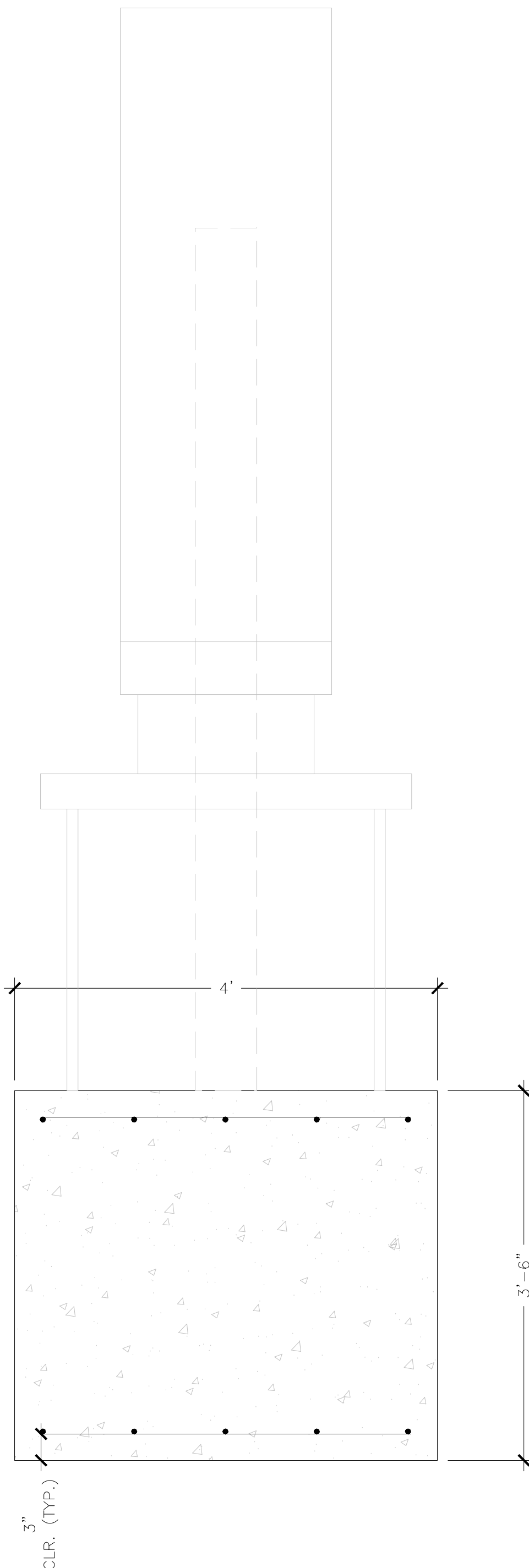


- LOCATION**
- CONTRACTOR TO FIELD LOCATED TARTAN ENTRANCE SECONDARY MONUMENT SIGN WITH HR GREEN AND MCC.
  - FINAL SIGN LOCATION TO BE STAKED IN THE FIELD AND TO BE REVIEWED AND APPROVED BY MCHENRY COUNTY COLLEGE PRIOR TO INSTALLATION.
- TYPE AND DIMENSIONS OF SIGN**
- FREE STANDING MONUMENT SIGN TO HAVE TWO IDENTICAL SIGN FACES AS SHOWN IN THE SIGN ELEVATION DIAGRAM. SIGN SHELL TO BE MANUFACTURED OUT OF SHEET ALUMINUM AND COMPLETELY ENCLOSED AND SEALED WITH APPROPRIATE WATERPROOFING SEALANT AND FASTENERS. FRAMING AND STRUCTURAL SUPPORT TO BE MANUFACTURED OUT OF STEEL AND ALUMINUM AND DESIGNED/ENGINEERED BY THE SIGN MANUFACTURER. SHOP DRAWINGS DEPICTING STRUCTURAL DESIGN INTENT AND ELECTRICAL/LIGHTING DESIGN TO BE SUBMITTED TO HR GREEN FOR APPROVAL. ALL STRUCTURAL DESIGNS SHALL BE SIGNED/SEALED BY A LICENSED STRUCTURAL ENGINEER.
  - OFFICIAL MCHENRY COUNTY COLLEGE LOGO AND PANTONE COLOR SCHEME TO BE USED. SIGN SHALL BE PAINTED WITH A HIGH QUALITY ENAMEL FINISH, SMOOTH AND FREE OF BLEMISHES.
  - "TARTAN DRIVE ENTRANCE" TEXT SHALL BE ARIAL BOLD FONT, 3" TALL LETTERING AS INDICATED ON THE SIGN ELEVATION DIAGRAM. ALL TEXT INCLUDING THE MCHENRY COUNTY COLLEGE LOGO SHALL BE MANUFACTURED OUT OF TRANSLUCENT/TRUE WHITE POLY CARBONATE AND ILLUMINATED (BACKLIT) FROM INSIDE THE SIGN. TEXT IS TO HAVE A CRISP LOOK WHEN ILLUMINATED AND HAVE A HIGH CONTRAST EFFECT BOTH DURING THE DAY AND AT NIGHT. CONTRACTOR TO PROVIDE SHOP DRAWINGS FOR PROPOSED LUMENS TO PRODUCE THIS EFFECT.
  - SHOP DRAWINGS DEPICTING TEXT AND LOGO DESIGN/MANUFACTURING INTENT SHALL BE SUBMITTED TO HR GREEN FOR APPROVAL.
  - IT IS RECOMMENDED THAT THE SIGN MANUFACTURER REVIEW ALL DIMENSIONS AND SPECIFICATIONS AND PROVIDE INPUT TO HR GREEN TO ENSURE AN EFFICIENT USE OF MATERIAL WHILE MAINTAINING THE DESIGN INTENT OF THE SIGN. ANY CHANGES TO THE DESIGN, DIMENSIONS, OR SPECIFICATIONS MUST BE APPROVED BY HR GREEN.
  - SOLAR POWER SHALL BE **\*BID AS AN ALTERNATIVE**
- INSTALLATION SPECIFICATIONS**
- ALL FASTENERS SHALL BE STAINLESS STEEL.
  - BASE OF SIGN SHALL SIT ON FINISHED GRADE WITH APPROPRIATE WEEP HOLES, GRADE SLOPE, AND WATER PROOFING MATERIAL IMPLEMENTED TO ENSURE MINIMUM RISK OF RUST OR OTHER WATER DAMAGE.
  - SIGN SHALL BE INTERNALLY LIGHT THE SAME AS THE NORTH AND SOUTH SIGNS. THE COLLEGE WILL COORDINATE GETTING ELECTRIC SERVICE TO THE TARTAN DRIVE ENTRANCE SIGN. SOLAR POWER SHALL BE **\*BID AS AN ALTERNATIVE**.
  - CONTRACTOR TO COORDINATE WITH HR GREEN FOR FINAL GRADE ELEVATION AND THE EXISTING GRADE CUT TO MEET THIS ELEVATION SHALL BE EVENLY SPREAD AROUND THE SIGN. ALL DISTURBED AREAS AROUND SIGN SHALL MAINTAIN 6" TOPSOIL. ALL DISTURBED AREAS SHALL BE RESTORED, INCLUDING BUT NOT LIMITED TO: TRENCHES DUG FOR UTILITY INSTALLATION, GRADING OUTSIDE OF THE LANDSCAPE AREA, DISTURBED AREAS DUE TO CONSTRUCTION VEHICLES, ETC.
  - CONTRACTOR SHALL LOCATE ALL UTILITIES PRIOR TO CONSTRUCTION.
  - CONTRACTOR IS TO OBTAIN ALL CITY PERMITS NECESSARY PRIOR TO CONSTRUCTION. PERMITS SHALL BE SUBMITTED TO HR GREEN FOR RECORD.

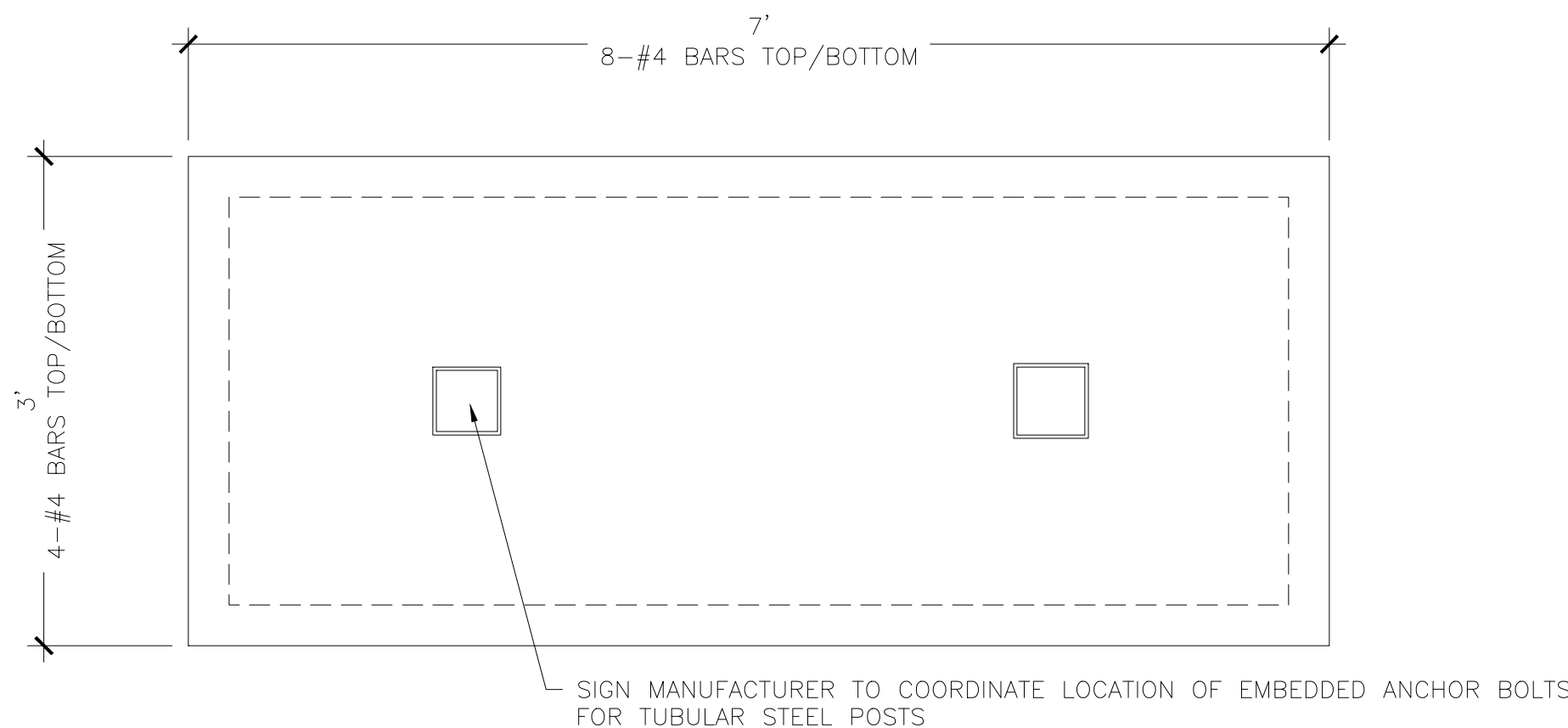




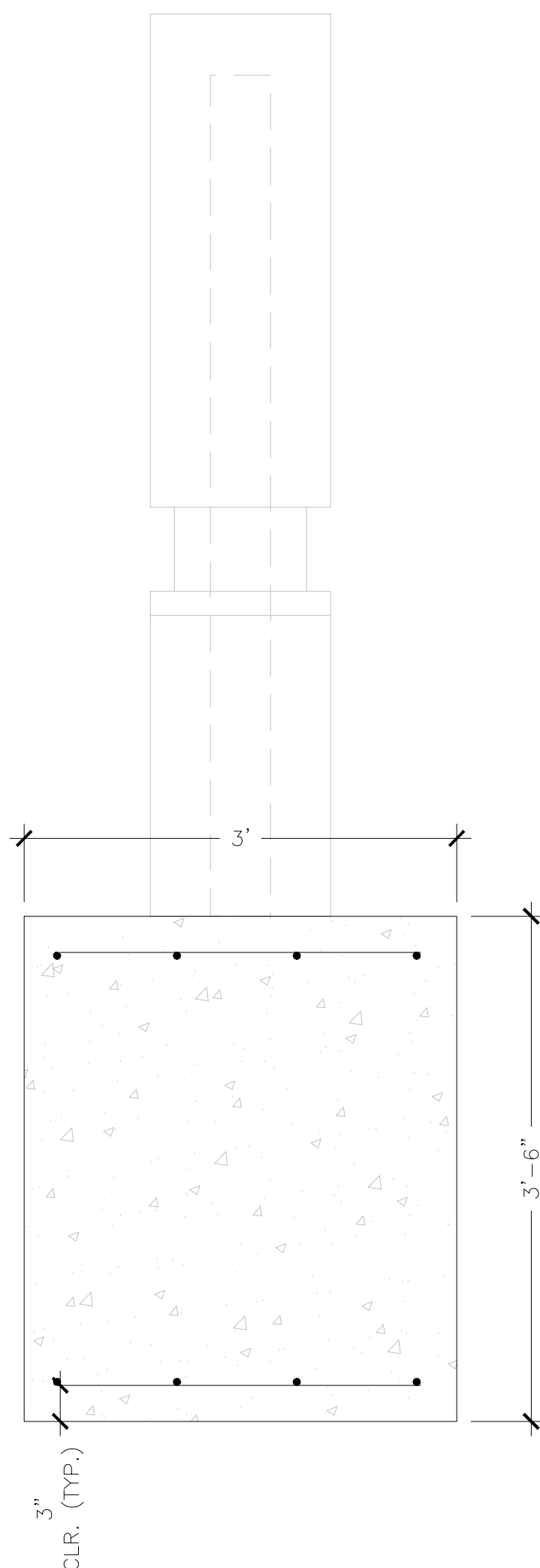
1 PRIMARY MONUMENT SIGN – PLAN VIEW  
SCALE: 1" = 1'



2 PRIMARY MONUMENT SIGN – SECTION  
SCALE: 1" = 1'



3 SECONDARY MONUMENT SIGNS – PLAN VIEW  
SCALE: 1" = 1'



4 SECONDARY MONUMENT SIGNS – SECTION  
SCALE: 1" = 1'

GENERAL NOTES

- DESIGN CODE: IBC 2006
- DESIGN LOADS: ASCE 7-05
- WIND VELOCITY: 90 MPH
- CONCRETE  $F'_c = 3000$  PSI
- REINFORCING STEEL ASTM A615 GR.60
- PROVIDE 3" MINIMUM CONCRETE COVER FOR REINFORCING
- ALLOWABLE SOIL BEARING PRESSURE ASSUMED TO BE 2000 PSF



Know what's below.  
Call before you dig.

DRAWN BY: SKD  
APPROVED: PLS  
CAD DATE:  
CAD FILE:

JOB DATE: 2016  
JOB NUMBER: 86130030

BAR IS ONE INCH ON  
OFFICIAL DRAWINGS:  
0  
IF NOT ONE INCH,  
ADJUST SCALE ACCORDINGLY.

NO.	DATE	BY	REVISION DESCRIPTION



ILLINOIS DESIGN FIRM # 184.001322  
420 N. FRONT STREET, SUITE 100  
McHENRY, ILLINOIS 60050  
PHONE: 815.385.1778 | TOLL FREE: 800.728.7805  
FAX: 815.385.1781 | HRGreen.com



MCC CAMPUS SIGN PACKAGE  
PRIMARY AND SECONDARY MONUMENT SIGNS  
McHENRY, ILLINOIS

STRUCTURAL FOUNDATIONS

SHEET NO.  
C.07